

Reliability in Action



L975H Wheel Loader

Power House



Gross Power: 267HP

Operating Weight: 25600KG

Payload: 7500KG

Member of the Volvo Group

L975H Wheel Loader

High Efficiency

- High efficiency electronic engine.
- The energy-saving low-speed engine fits well with high efficiency and realizes a comprehensive energy saving of more than 10%
- High reliability, good adaptability, low maintenance cost



High Reliability

- Volvo HT200 fixed-shaft, electro-hydraulic shift transmission of four forward gears and four reverse gears features high transmission efficiency
- It has the function of power cut-off and neutral gear lock-up, enabling stable and impact-free gearshift and high reliability.
- The KD gearshift function configured reduces the operating efforts and enhances the flexibility and efficiency



High Quality

- Hydraulic system components use internationally renowned suppliers, large flow, high pressure and smooth composite action
- Automatically adjust pump discharge according to the load, to reduce the overflow of the energy consumption by 10%
- Light weight operation, high efficiency and reliable performance



Comfortable

- FOPS & ROPS Cab, the super-large, full view, low noise, double curved arc front windshield. Luxury seat and user-friendly design, to build the best operating environment. Inner space increased by 15%, width of view increased by 20%, sealing property increased by 35%, with powerful air-conditioning.



Adaptability

- Equipped with oil-bath filter to meet the abominable environment



Convenience

- Automotive-grade mold-formed steel hood with high structural strength and elegant appearance
- The double gas spring opens the hood and is easy to operate
- Large opening side door maintenance is more convenient.



Heavy - Duty

- Heavy duty drive axle and oscillating rear drive axle jointly developed by Volvo and SDLG. Meet the driving force and escapability of bad conditions.
- The unique rear axle double swing arm connection makes the load distribution of the whole machine reasonable, large bearing capacity, long service life and high reliability



Greater Carrying Capacity

- Lift arm uses the lightweight technology, the effective load of each work cycle increased 2% to achieve energy saving
- Lower resistance bucket, leading board of trapezoidal structure, makes working resistance small can shovel with hard material, increases 10% in load capacity improves the working efficiency, reduces the use cost and saves energy.



Greater Reliability

- Fully new generation of boxed frame design by Volvo and SDLG teams.
- The load distribution is reasonable. Fatigue test for 200 k hours, for greater reliability.



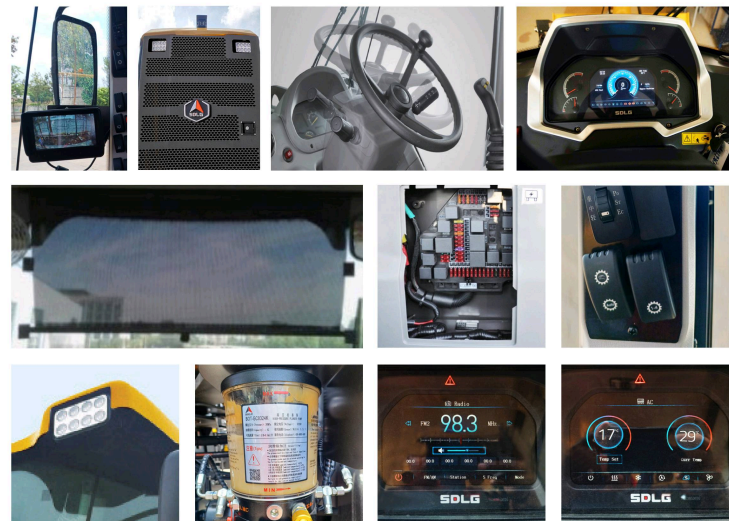
Safety

- Full Hydraulic brake system, more sensitive steady and reliable.



Standard Configurations

WP10G270E341 ENGINE	Reverse alarm
Three power selection mode	26.5 x 25-28PR-L3
HTE 220 Automatic transmission	ACLS (Automatic Centralised Lubrication System)
SDLG Heavy duty axle	Engine fan guard
Finger tip lever	Neutral start
4.5m³ GP Bucket with teeth	Air pre-filter
Spacious ROPS / FOPS Certified AC Cabin	Power switch
Fresh air conditioning	Tool Box
Adjustable steering column	Oil bath air filter
Digital combination instrument	Full hydraulic steering
Air control parking brake	Variable flow steering system
Music System with AUX, USB & Bluetooth Connectivity	Hydraulic drive cooling
Sun visor	Box type frame
Clothes hook	Reverse camera
Cup holder	Large space cab
Centralized control box	Full hydraulic service brake
Front & rear wiper	
LED Working lights	



L975H

Wheel Loader

ENGINE

- Fuel Efficient CRDI Engine
- 3 Working Modes
- Higher Power & Torque

TRANSMISSION

- HTE 200 Heavy duty Transmission
- Automatic Powershift with 4F & 4R Gear

STYLING

- Latest H series outlook Look
- New styling for instrument cluster display
- Extra working lamps
- Rotating Beacon

HYDRAULIC

- Double ball handle Pilot Joystick
- Proven world class components
- Load sensing steering

CAB

- ROPS / FOPS Certified A/c Cabin
- Ergonomic design
- Adjustable suspension Seats
- Adjustable steering column

OTHERS

- Multiple optional Bigger bucket
- SDLG Telematics with App

STRUCTURE

- Box Type Frame
- Long Boom
- Long wheelbase

AXLES

- SDLG HD Axles
- Dry Axle
- Full hydraulic brake



*The illustration may include optional equipment.

Technical Specifications

Standard Equipment

Engine	
Engine model	WP10G270E341
Engine type	In-line, water-cooled, CRDI,
Gross Power hp	267 @ 2200 rpm
Maximum torque Nm	1300 @ 1400 rpm
Displacement (ml)	9726
Number of cylinders	6
Bore / stroke (mm)	126/130
Emission standard	Tier - 3

Transmission System	
Model & Type	HTE 220 automatic transmission
No. of gears	F4 and R4
Torque converter	Single-stage three-element single turbine torque converter
Machine speed FLF2, F3 & F4 (km/h)	0~7.4/13.7/27.3/40
Machine speed R1, R2, R3 & R4 (km/h)	0~7.4/13.7/27.3/40

Axles	
Front	Heavy Duty AL45 series with 45T carrying capacity
Rear	Heavy Duty AL42 Series with 42T carrying capacity
Rear Axle Oscillation (Deg)	±11º

Hydraulic system	
Type of working device	Double ball handle hydraulic pilot control
Maximum flow (lpm)	434
System working pressure (MPa)	25.5

Hydraulic cycle time	
Bucket lift time (full load) s	≤5.5
Bucket fall time (no load) s	≤4.3
Bucket dumping time (no load) s	≤1.1
Total cycle time s	≤10.9

Steering System	
Type	Load-sensing full hydraulic steering
Pump	Variable axle piston pump
Working pressure of steering system (MPa)	21
Steering angle (°)	38°
Steering pump flow (lpm)	198

Brake system	
Service brake	Full Hydraulic Dry Disc Brake
Parking brake	Pressure releasing caliper disc brake
Brake pressure (MPa)	13.8

Tyres	
Tyre size	26.5 x 25 L3
Front Tyre pressure (MPa)	0.475±0.01
Rear tyre pressure (MPa)	0.40±0.01

Cabin	
Cabin	Standard ROPS /FOPS certified
AC	Standard with dual filters & automatic climate control
Operator seat	Mechanical suspension Seat
Music System	MP3 Player with USB, Aux and Bluetooth connection
Seat belt	Standard
Rotating Beacon Light	Standard

Performance	
Payload capacity (kg)	7500
Bucket volume, Heaped ISO/SAE (GP) m³	4.5
Operating weight (kg)	25600
Maximum breakout force (kN)	≥216
Maximum traction force (kN)	≥226
Static Tipping Load Straight (kg)	16900
Static Tipping Load Full Turn (kg)	15200

Electrical system	
Voltage	24V
Batteries	2

Dimension with 4.5 m³ GP Bucket	
A. Overall length (mm)	9635
B. Wheelbase (mm)	3550
C. Overall height (mm)	3620
D. Minimum ground clearance (mm)	506
E. Maximum dumping height (mm)	3650
F. Axis pin at maximum lift height (mm)	4780
G. Corresponding dump reach (mm)	1310
H. Gradeability	30º
L. Overall width (mm)	3620
M. Outside width of wheel (mm)	3115
N. Wheel tread	2350
O. Min. turning radius outside of tire (mm)	6375
P. Horizontal crossing radius of bucket (mm)	7695

Special standard features	
LED head lights & working lights	Adjustable Steering column
Head light protection	Back up alarm
Oil Bath air cleaner	Rotating Beacon
Reverse Camera	Front and rear wiper
Blind spot mirrors	Sun visor
Automatic Lubrication system (CLS)	GPS

Optional Attachments	
HD Rock Bucket m³	3.2 / 3.5
LM Bucket m³	6.5 / 7.0
Pallet fork	Available
High lift log attachment	Available

