

YourGrowthMachine



E6150F Hydraulic Excavator

Powerful performance



Gross Power: 108hp @ 2000rpm

Operating Weight: 13800 ~14800 kg

Member of the Volvo Group

E6150F

Hydraulic Excavator

POWERFUL ENGINE

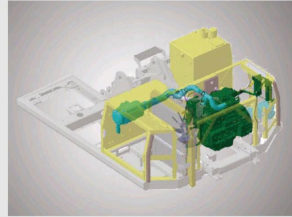
- Fuel efficient and powerful
- Electronic unit pump
- Turbocharger+ intercooler
- ECU controlled



- Well-matched engine and hydraulic systems
- 10 work modes
- Auto-idle function



- 2-stage air filters
- 2-stage fuel filters
- Fuel injector filter
- Water level alarm from oil-water separator
- Auto engine power cut-off upon fault detection
- Limp-home function

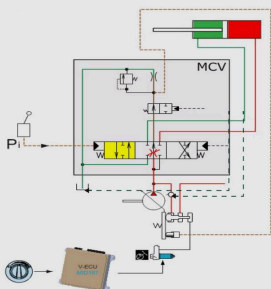


- New-generation electronics
- Latest colour display
- Self fault diagnostics

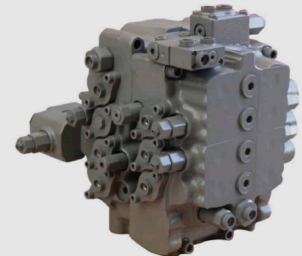
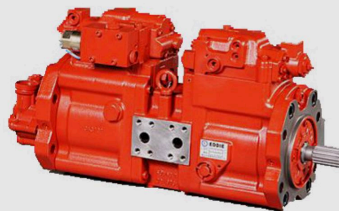


ADVANCED HYDRAULIC SYSTEM

- Efficient hydraulic system with world-class components
- Double pump confluence function

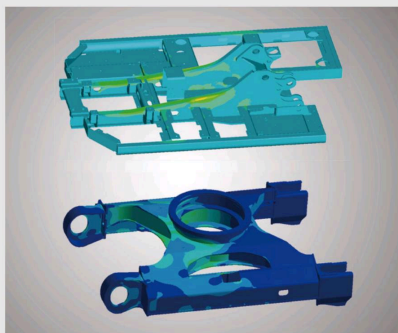


- Regeneration function
- Priority function
- Automatic travel speed selection



ROBUST STRUCTURES

- Reinforced X undercarriage with 35% higher strength



- Reinforced boom & arm
- Robotic welding with flaw detection

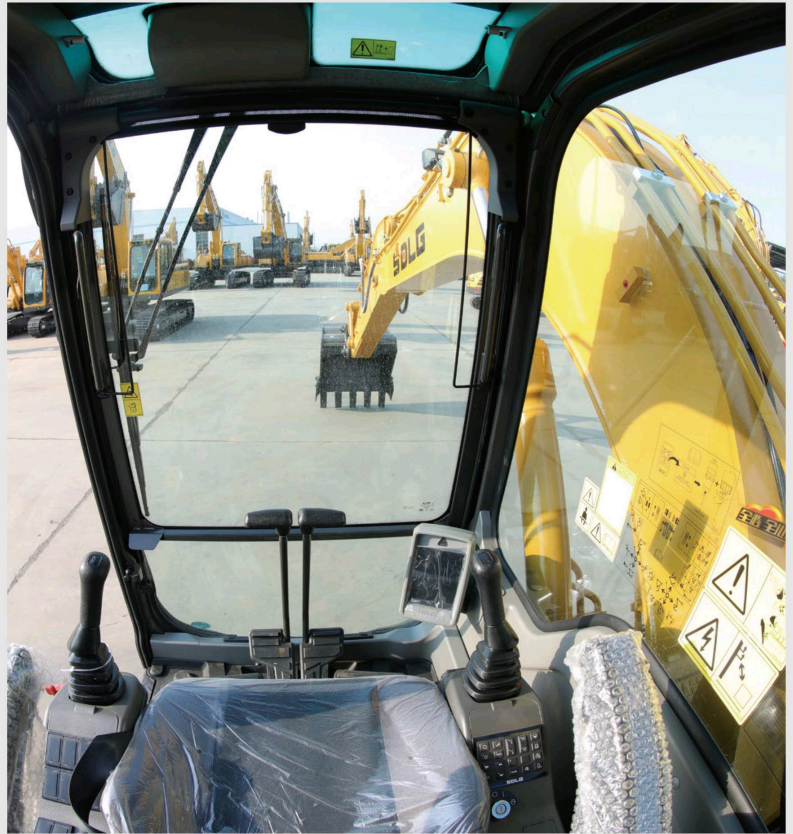


- Anti-wear bucket with 20% longer life
- Chromed pins



SAFE AND COMFORTABLE CABIN

- Excellent visibility
- Sliding windscreen
- Large wiper area
- 6-way adjustable fabric suspension seat
- Powerful A/C with multiple air outlets in a well-sealed cabin
- Tinted glass
- Silicon oil shock absorbers
- Multi-function colour LED display



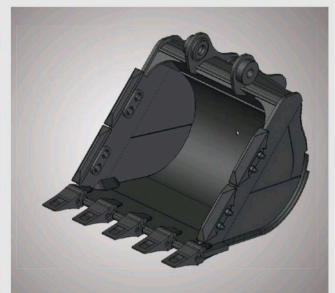
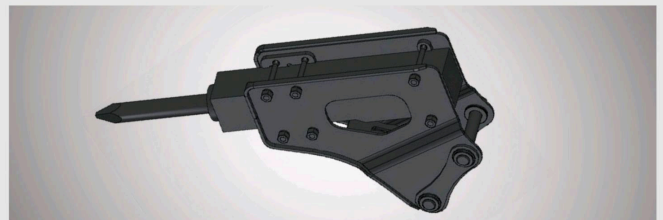
EASY MAINTENANCE

- Wide engine hood openings
- Grouped filters, pressure testing port and electrics with ground-level access
- Computer diagnostics interface
- Perforated anti-slip plates



RICH OPTIONS

- Breakers
- Rock / GP / LM buckets
- Cabin protection guards
- Multiple track shoe width
- Additional work lights



*The above mentioned illustrations may not refer to specific models.

E6150F

Hydraulic Excavator

POWERFUL YET ENERGY-SAVING



The high-torque, low-RPM DDE engine delivers both power and efficiency in 10 optimised work modes. The electronic unit pump (EUP) design features a high injection pressure and a good tolerance on fuel quality.

SMOOTH OPERATIONS



E6150F uses an advanced hydraulic system with regeneration and priority functions, making the machine reliable and highly efficient.

RELIABLE AND DURABLE



Renowned engine and hydraulic systems. Reinforced boom, arm and undercarriage, chromed pins and upgraded electronics on board provide excellent machine durability and reliability.

MULTI-PURPOSE



Access more applications with breaker piping and various bucket and track shoe options. This machine is ideal for a wide range of general construction tasks.



SAFE AND COMFORTABLE



A variety of protective features improve man-machine safety. A spacious cabin provides a pleasing driving experience with excellent fields of vision, a powerful air conditioning system, a comfortable suspension seat, and noise and vibration reduction technologies.

EASY TO MAINTAIN



Large engine hood openings, centralised filters and electrics with ground-level access reduce maintenance efforts. A computer interface is available for quick diagnostics and review of fault history.



*The illustration may include optional equipment.

Technical Specifications

Standard Equipment

Engine		
Model	BF4M2012-11 T3R/4-B796	
Type	Four stroke, Supercharged, intercooled	
Rated Power	hp @ r/min	108 @ 2000
Max. Torque	Nm / r/ min	450 @ 1500
Number of cylinders	4	
Displacement	ml	4038
Bore x Stroke	mm	101 x 126
Emission	Tier III (GB 20891-2014)	

Electrical System		
System voltage	V	24
Battery voltage	V	24
Battery capacity	Ah	100
Alternator voltage	V	28
Starter voltage	V	24

Undercarriage		
No. of track shoes	46	
No. of top rollers	2 x 1	
No. of bottom rollers	2 x 7	
No. of track guards	2 x 2	

Hydraulic system		
Hydraulic system type	Twin pump constant power negative flow control	
Main pumps	2 axial piston pump	
Max. flow rate	L/min	2 x 118 +20

Relief valve setting		
Implement Circuit bar	330/350	
Travel Circuit	343	
Swing Circuit	245	
Pilot Circuit	39	

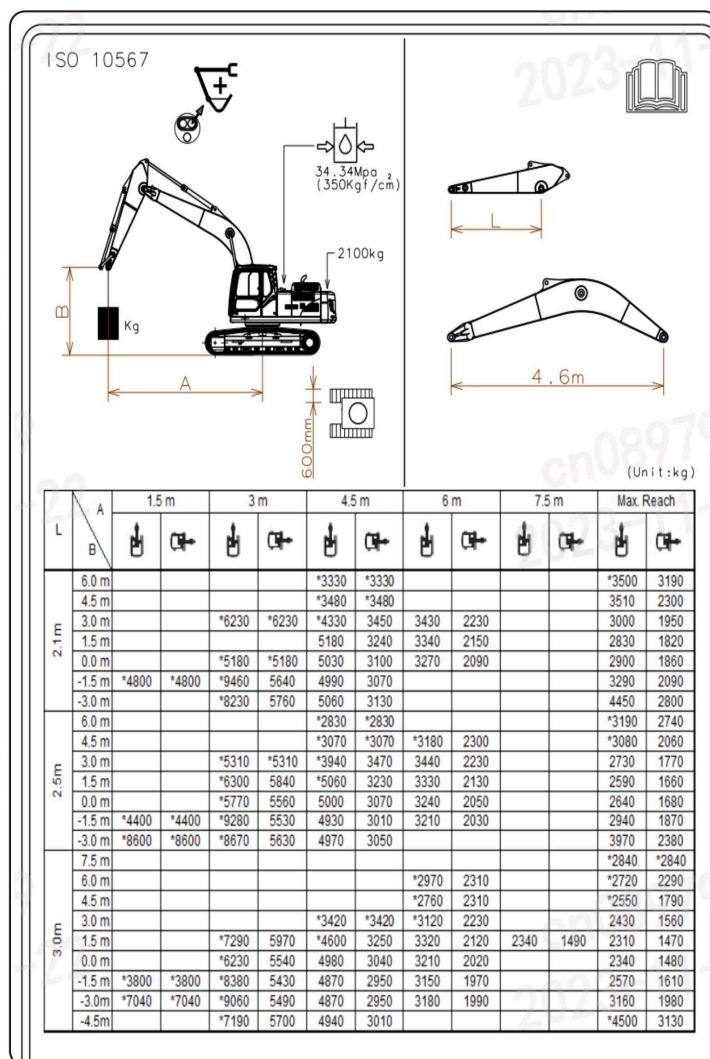
Drive and Brakes		
Drive motor	2 axial piston pump	
Max drawbar pull	kN	109.8
Max travel speed {low/high} km/h	3.2 /5.5	
Service/parking brakes	Wet and disc type	
Gradeability	35	

Swing system		
Swing motor	-	1 axial piston motor
Swing brake	-	Wet and disc type
Swing speed	r/min	0-11

Service Refill Capacity		
Fuel Tank	L	260
Engine Coolant	L	19.5
Engine Oil	L	16.5
Swing drive device	L	3.9
Travel drive device	L	2 x 2.2
Hydraulic tank	L	100
Hydraulic system	L	190

Attachments (Bucket) Options		
GP Bucket	m ³	0.75 /0.8
HD Bucket	m ³	0.6

Lifting Capacity		
------------------	--	--



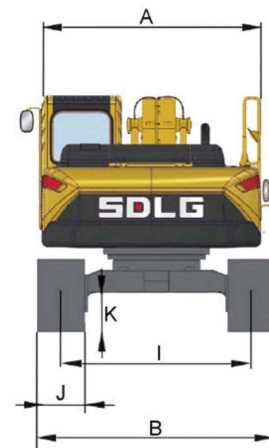
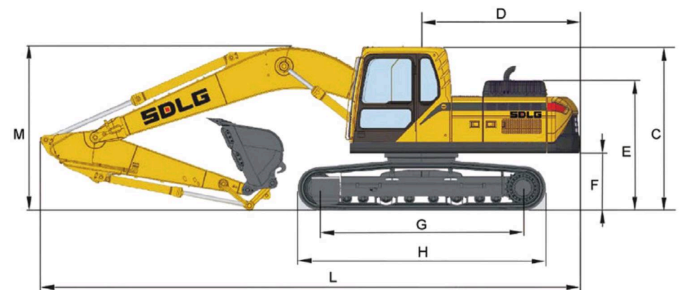
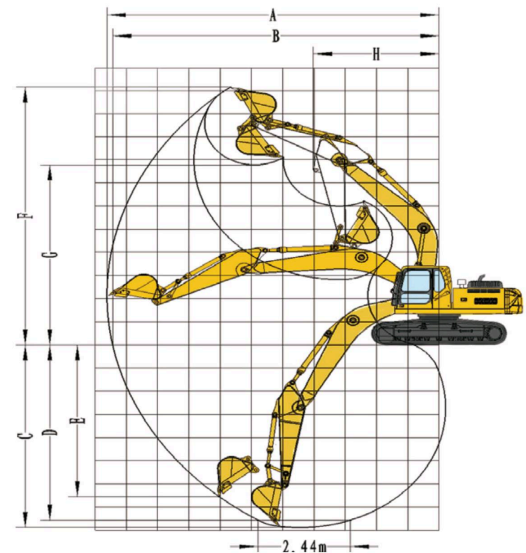
Dimensions

Excavating range

A. Maximum digging reach	mm	7980
B. Maximum digging reach on ground	mm	7830
C. Maximum digging depth	mm	5160
D. Maximum digging depth (horizontal 2.5m)	mm	4920
E. Maximum vertical digging depth	mm	4570
F. Maximum cutting height	mm	8170
G. Maximum dumping height	mm	5720
H. Maximum front swing radius	mm	2600
Max. excavating force of bucket (ISO)	kN	98.1
Max. excavating force of arm (ISO)	kN	67.7

Dimensions

Boom length	mm	4600
Arm length	mm	2100
A. Overall width of upper assembly	mm	2450
B. Overall width	mm	2590
C. Overall height	mm	2770
D. Tail swing radius	mm	2200
E. Overall height of engine hood	mm	2080
F. Ground clearance of upper frame	mm	940
G. Wheel base	mm	3000
H. Track length	mm	3740
I. Track gauge	mm	1990
J. Track shoe width	mm	600
K. Minimum ground clearance	mm	436
L. Overall length	mm	7700
Bucket capacity (GP)	m ³	0.75 / 0.8
Operating weight	kg	13800 ~ 14800



OPTIONAL EQUIPMENT

Electrical/Electronic control system

Fuel filler pump	0
Extra halogen work lights (Cab-mounted 1/ Counter weight-mounted 1)	0
Rotating warning beacon	0
Rear-view camera	0
Burglar alarm	0

Undercarriage

700 / 800 mm shoe track	0
-------------------------	---

Attachments

Large Bucket	0
Rock Bucket	0
X1 pipes	0
X3 pipes	0
Side or top mounted breakers	0
Hydraulic crusher	0
Log grapple	0
Light front FOG (falling object guard)	0
Heavy front / top FOG	0