

E6135Fi

SDLG Hydraulic Excavator 12.5 - 13.5 t 101hp



Member of the Volvo Group

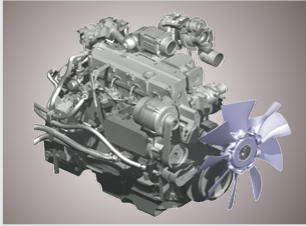
Reliability in Action

E6135Fi

Hydraulic Excavator

POWERFUL ENGINE

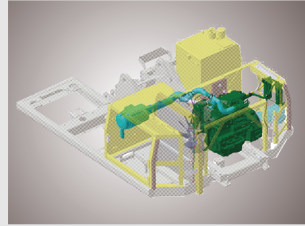
- DDE engine customised for SDLG
- Electronic unit pump
- Turbocharger + intercooler
- ECU controlled



- Well-matched engine and hydraulic systems
- 10 work modes
- Auto-idle function



- 2-stage air filters
- 2-stage fuel filters
- Fuel injector filter
- Water level alarm from Fuel Water Separator
- Auto engine power cut-off upon fault detection
- Limp-home function

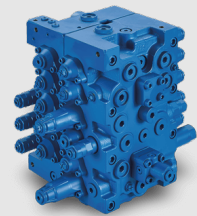
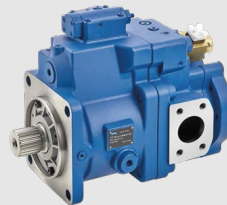
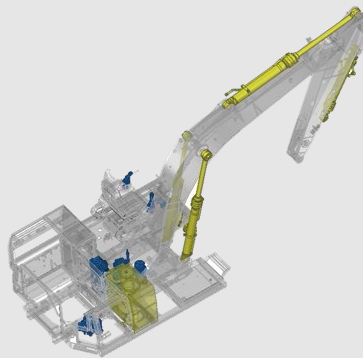
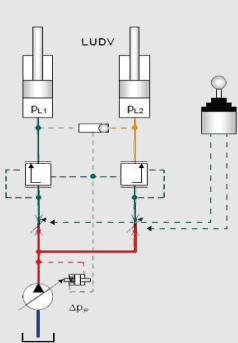


- New-generation electronics
- New-generation colour display
- Self fault diagnostics



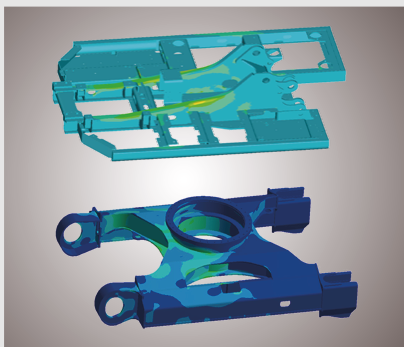
ADVANCED HYDRAULIC SYSTEM

- Load-sensing system / Negative-flow system
- Double pump confluence function
- Regeneration function
- Priority function
- Automatic travel speed selection



ROBUST STRUCTURES

- Reinforced X undercarriage with 35% higher strength
- Reinforced boom & arm
- Robotic welding
- Welding flaw detection
- Anti-wear bucket with 20% longer life
- Chromed pins

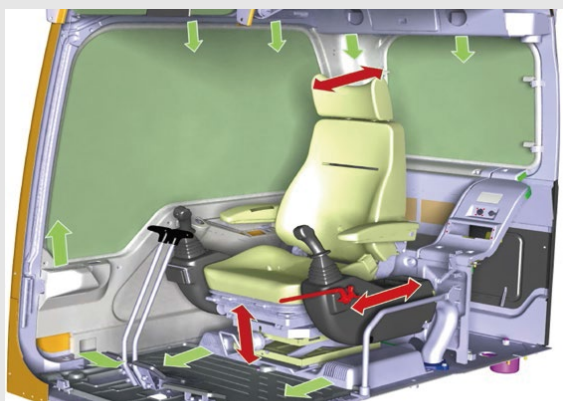


E6135Fi

Hydraulic Excavator

SAFE AND COMFORTABLE CABIN

- Excellent fields of vision
- Sliding windscreen
- Large wiper area
- 6-way adjustable fabric suspension seat
- Powerful A/C with multiple air outlets in a well-sealed cabin
- Tinted glass
- Silicone oil shock absorbers
- Multi-function colour LED display



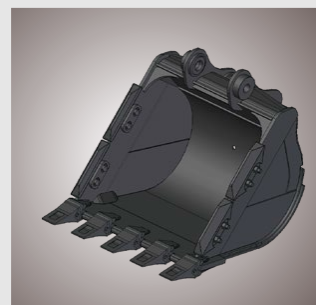
EASY MAINTENANCE

- Wide engine hood openings
- Grouped filters, pressure testing port and electrics with ground-level access
- Computer diagnostics interface
- Good anti-slip



RICH OPTIONS

- Top/side mounted breakers
- Rock/GP/LM buckets
- Multiple track shoe width
- Additional work lights



*The abovementioned illustrations may not refer to specific models.

E6135Fi

Hydraulic Excavator

POWERFUL YET ENERGY-SAVING



The high-torque, low-RPM DDE engine delivers both power and efficiency in 10 optimised work modes. The electronic unit pump (EUP) design features a high injection pressure and a good tolerance on fuel quality.

SMOOTH OPERATIONS



E6135Fi uses a Negative flow system. the hydraulic systems are sensitive, reliable and highly efficient. they are equipped with regeneration and priority functions

RELIABLE AND DURABLE



Both the engine and hydraulic systems are supplied from world-renowned manufacturers. Reinforced boom, arm and undercarriage, chromed pins and upgraded electronics on board provide excellent machine durability and reliability.

MULTI- PURPOSE



Access more applications with breaker piping and various bucket and track shoe options. This machine is ideal for a wide range of general construction tasks.



SAFE AND COMFORTABLE



A variety of protective features improve man-machine safety. A spacious cabin provides a pleasing driving experience with excellent fields of vision, a powerful air conditioning system, a comfortable suspension seat, and noise and vibration reduction technologies.

EASY TO MAINTAIN



Large engine hood openings, centralised filters and electrics with ground-level access reduce maintenance efforts. A computer interface is available for quick diagnostics and review of fault history.



E6135Fi

Hydraulic Excavator

ENGINE

	Unit	E6135Fi
Model	-	BF4M2012-10T3R-B124
Type	-	four-stroke, turbocharged, inter-cooled
Power	kW@rpm	75@2000
Max. torque	Nm@rpm	425/1500
Displacement	ml	4038
No. of cylinders	-	4
Cylinder bore x stroke	mm	101×126

ELECTRICAL SYSTEM

	Unit	E6135Fi
System voltage	V	24
Battery voltage	V	24
Battery capacity	Ah	2x100
Alternator voltage	V	28
Starter voltage	V	24

UNDER CARRIAGE

	Unit	E6135Fi
No. of track shoes	-	2×42
No. of top rollers	-	2×1
No. of bottom rollers	-	2×6
No. of track guards	-	2×1

PARAMETER

	Unit	E6135Fi
Total mass	kg	12500
Bucket capacity	m ³	0.55
Bucket capacity range	m ³	0.48 & 0.6
Average ground pressure	mm	40.9
Slewing speed	r/min	10.3
Traveling speed (low/high)	km/h	3.0/5.1
Maximum digging force	kN	85

HYDRAULIC SYSTEM

	Unit	E6135Fi
Hydraulic system type	-	Double Pump Constant Power Negative Flow Control
Working pressure	kgf/cm ²	330/350
Main valve model	-	HVME180B
Hydraulic control type	-	Pilot-actuated proportional control valve
Maximum flow rate	L/min	2×110+20
Main pump model	-	HP3V75D
Motor (rotary/travel) model	-	M5X80CHB/TM22VC

HYDRAULIC CYLINDER

	Unit	E6135Fi
Boom cylinder - bore × stroke	mm	2 - 100 × 973
Arm cylinder - bore × stroke	mm	1 - 115 × 970
Bucket cylinder - bore × stroke	mm	1 - 90 × 856

FUEL CHARGE

	Unit	E6135Fi
Fuel filling capacity	L	260
Hydraulic oil filling capacity	L	190
Engine oil filling capacity	L	13
Oil filling capacity of walking reducer	L	2×2.2
Oil filling capacity of slewing reducer	L	3.9
Water radiator antifreeze coolant	L	19.5

ROTARY SYSTEM

	E6135Fi
Slewing type	Hydraulic internal-tooth single-row ball bearing
Type of slewing brake	Wet disc (hydraulic oil release, spring compression)
Model of slewing bearing	-

WALKING SYSTEM

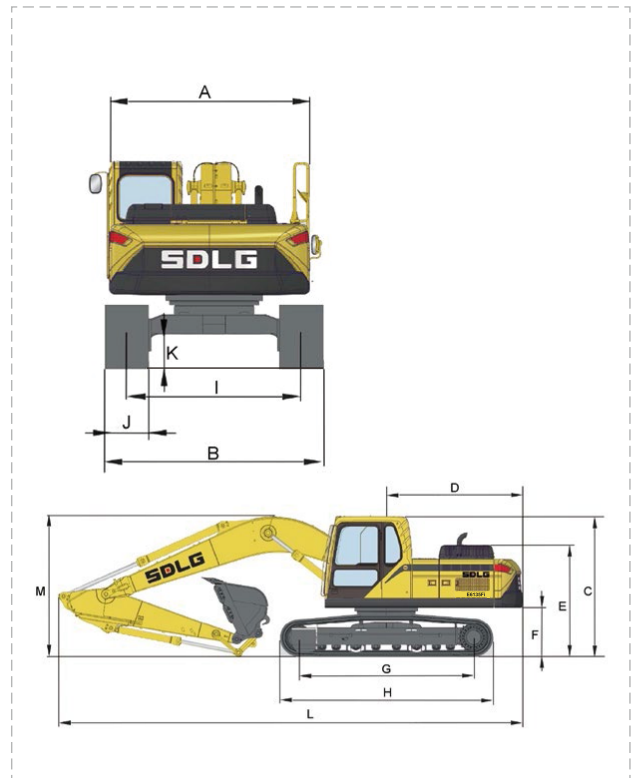
	E6135Fi
Number of supporting wheel (one side)	6
Track shoe width (three-teeth) (mm)	500
Number of carrier roller (one side)	1
Type of travel brake	Wet disc (hydraulic oil release, spring compression)

E6135Fi

Hydraulic Excavator

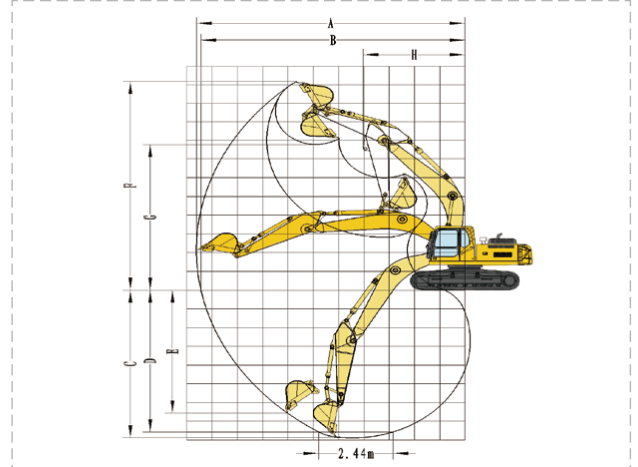
DIMENSIONS

	Unit	E6135Fi
Overall length	mm	7340
Overall width	mm	2490
Overall height	mm	2830
Boom length	mm	4260
Wheel track	-	1990
Arm length	mm	2315
wheelbase	mm	2700
Contour dimension of complete machine	mm	7340×2490×2830
Overall width of upper assembly	mm	2450
Overall width of chassis	mm	2490
Overall height to cab top	mm	2770
Rear slewing radius	mm	2200
Overall height to hood top	mm	2080
Ground clearance of upper assembly	mm	900
Overall length of crawler	mm	3440
Wheel track of crawler	mm	1990
Track shoe width	mm	500
Minimum ground clearance	mm	430
Minimum front turning radius	mm	2650



EXCAVATING RANGE

	Unit	E6135Fi
Maximum digging radius	mm	7790
Maximum digging depth	mm	5060
Maximum discharge height	mm	5625
Shovel width (with band edge)	mm	1087
Maximum digging height	mm	7900
Maximum digging radius of reference ground	mm	7650
Maximum vertical digging depth	mm	4625



SWING SYSTEM

	Unit	E6135Fi
Swing motor	-	Axial piston motor
Swing brake	-	Wet disc
Swing speed	r/min	0-10.3

DRIVE AND BRAKES

	Unit	E6135Fi
Drive motor	-	2 axial piston motors
Max drawbar pull	kN	109.8
Max travel speed (low/high)	km/h	3.0/5.1
Service/parking brakes	-	Wet disc, spring applied, hydraulic release
Gradeability	°	35

ATTACHMENTS

Bucket	Model	Capacity/m³	Width/mm	Weight/kg	Number of teeth/side cutters
	E6135Fi	0.55	1040	497	5/2

Equipment and Features

STANDARD EQUIPMENT			
E6135Fi			
Engine		Undercarriage	
Dalian diesel engine	S	Durable "X" undercarriage	S
Electronic unit injection pump	S	Greased and sealed track links	S
Turbocharger	S	Reinforced carrier/top rollers	S
Inter-cooler	S	Steel track with triple grousers	S
Two-stage air filters	S	Cab and interior	
Two-stage fuel filters	S	Fabric operator seat with suspension	S
Oil-water separator	S	Seat belt	S
Pre-heater	S	Joysticks	S
Electrical/Electronic control system		Radio with MP3/AUX	S
Engine safe start with restart prevention	S	Master key	S
Oil-water separator level indicator	S	Hour meter	S
Automatic idling system	S	Sun visor	S
10 work modes	S	Dual armrests	S
Central fuse box	S	Air conditioner	S
High-capacity halogen work lights (Frame-mounted 2 & Boom-mounted 1 LH)	S	Sliding wind screen	S
Battery, 24V	S	Cup holder	S
Master electrical disconnect switch	S	OPTIONAL EQUIPMENT	
Starter Motor, 24V	S	E6135Fi	
Colour monitor and keypad	S	Electrical/Electronic control system	
Acoustic travel alarm	S	Fuel filler pump	o
Lock lever	S	Extra halogen work lights (Cab-mounted 1 / counterweight-mounted 1)	o
Fault diagnosis interface (tool not included)	S	Rotating warning beacon	o
Hydraulic system		Rear-view camera	o
Load-sensing hydraulic system	-	Burglar alarm	o
Negative flow hydraulic system	S	Hydraulic system	
Boom/arm/swing priority	S	High-temperature/low-temperature hydraulic oil module	o
Boom/arm regeneration	S	Undercarriage	
Boom/arm holding	S	600/700/800mm steel track	o
Automatic two-speed travel motors	S	Attachment	
Cylinder/swing cushioning	S	Light Material Bucket	o
Dust sealing	S	HD Bucket	o
Hydraulic oil (ISO VG46)	S	X1 pipes	o
Multi-stage filtration	S	X3 pipes	o
Frame		Side or top mounted breakers	o
Reinforced revolving frame	S	Hydraulic crusher	o
Reinforced boom mounting	S	Log grapple	o
Heavy-duty anti-sintering bushings	S	Light front FOG (falling object guard)	o
Rear-view mirror	S	Heavy front/top FOG	o



Member of the VOLVO Group

SDLG is member of the Volvo Group and one of the largest manufacturers of construction machinery, with a wide network of dealerships and service workshops throughout the world.

Toll free – 1800 108 6586

www.sdlgindia.com

Connect with us on: [f](#) [v](#)