

V O L V O



POWER THROUGH EVERY LAYER, BUILD SUCCESS WITH EVERY PASS

Volvo SD110 Soil Compactor

Engineered to Maximize Your Productivity

Volvo Construction Equipment



The Road to Smarter Compaction

When you're building roads that need to last, every layer counts. The Volvo **SD110** delivers superior compaction with advanced technology and features that keep you efficient and productive shift after shift. Built with the operator friendly controls, helps you get the job done faster — with better results.

Powerful & Efficient Performance



More Power, Less Fuel

The powerful Volvo Eicher Engine E494 (74 kW, CEV V Compliant) offers upto 10% better fuel efficiency, reducing costs without compromising performance.



Eco-Friendly Emissions

Advanced DOC+DPF+SCR+ASC system ensures compliance with the latest environmental regulations while improving machine performance.



Work Smarter and Harder



Stay Comfortable

The vibration-resistant seat and spacious platform minimize fatigue during long shifts.



Clear Visibility

The headlight mounting bracket offers enhanced illumination for safer and more effective nighttime work.



Precision in Your Hands

Ergonomic controls ensure smoother operation with less operator effort.



Safety at Every Step



Operator Presence Switch

Automatically shuts down the engine after 5 seconds if the operator leaves the seat — improving safety and preventing accidental operation.



3-Point Contact Handrail

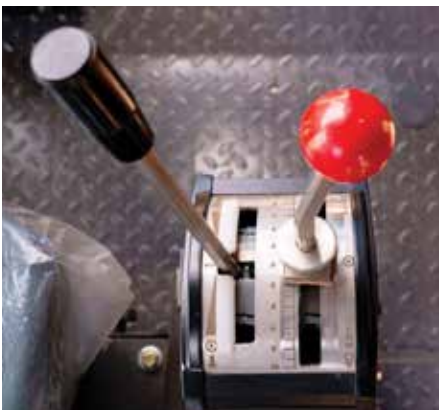
Ensures the operator to have maximum stability and support for safe access.



Heavy-Duty Sunroof with ROPS

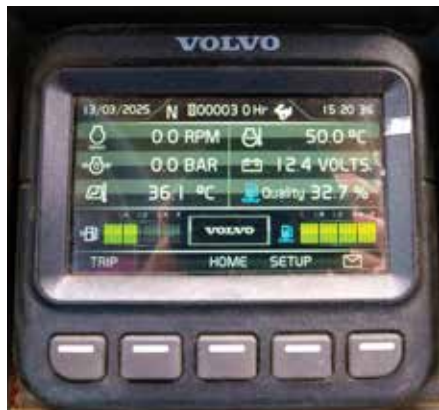
Provides enhanced protection in challenging conditions for operator

Features That Drive Results



Customizable Compaction

Infinitely variable vibration (0 to 30Hz) gives you total control over your compaction results.



Onboard 4.3" Color Display

Advanced diagnostics, fuel monitoring, and service reminders keep your machine running optimally.



Compaction Gauge

Measures material stiffness during compaction , providing real-time data to operator for efficient compaction.

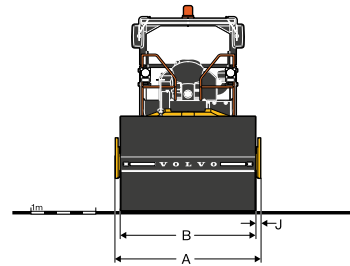
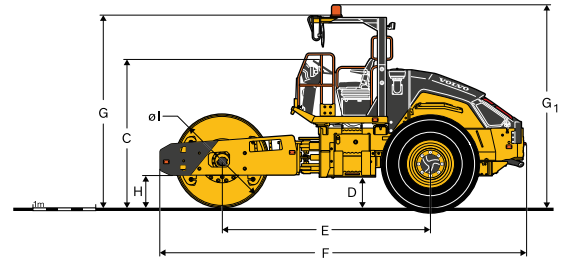
Specifications

Model			SD110D2	SD110DD
Drum Type			Smooth	
Machine Weights				
Operating Weight (CECE)		kg	11150	11250
Static Weight @ Drum		kg	6030	6130
Static Weight @ Tyres		kg	5120	5120
Shipping Weight		kg	11000	11060
Drum				
Width		mm	2134	
Diameter		mm	1500	
Shell Thickness		mm	25	
Vibration				
Frequency		Hz	0 - 30	
Centrifugal Force	High Amp	kN	243	
	Low Amp	kN	130	
Nominal Amplitude	High Amp	mm	1.9	
	Low Amp	mm	1.0	
Propulsion				
Type			Hydrostatic	
Tires			23.1 x 26 VRC 18-R3 8PR TL	
Drum drive			-	Single speed motor with planetary gear drive
Travel Speed				
High		km/h	0-12	0-11
Low		km/h	0-6	0-5
Engine				
Make / Model			VECV, E494 TCI-HPCR CEV STAGE V	
Engine Type			Turbo charged Inter cooled	
Rated Power @ 2 200 r/min		kW	74kW	
Electrical System				
Voltage (Negative ground)		Volt	12	
Alternator		A	90	
Batteries		CCA	750	
Brakes				
Service			Hydrostatic	
Parking / Secondary			Spring-applied, hydraulically released on axle	Spring-applied, hydraulically released on axle and drum
Miscellaneous				
Articulation Angle (Plus/Minus)		°	40	
Oscillation Angle(Plus/Minus)		°	17	
Inside turning radius		mm	3850	
Fuel Capacity		l	196L	
Hydraulic Oil Capacity		l	70L	
Gradeability (theoretical)		%	26	50

STANDARD EQUIPMENT

	SD110D2	SD110DD
Engine		
Battery disconnect switch	•	•
Propulsion		
Drum drive	-	•
Operator environment		
Operator seat, steering wheel and main controls	•	•
Propulsion control lever	•	•
1 charger socket USB 5V	•	•
Roll over protective structure (ROPS)	•	•
Storage compartments	•	•
Easy to clean anti slip cab floor	•	•
Seat with Operator presence switch	•	•
2" Seat Belt	•	•
Detachable ROPS	•	•
1x1.2m Visibility	•	•
Vibration and drum system		
Variable Frequency 0 to 30 Hz, 2 Amplitudes	•	•
Electrics and electronics		
4.3" LCD Colour Display	•	•
2 cab mounted worklights, Rear	•	•
Road light	•	•
Emergency stop button	•	•
Back-up alarm	•	•
Fuel level with Sensor	•	•
Sound Level		
Sound power L(WA), guaranteed	dB(A) 107	

Not all products are available in all markets. Under our policy of continuous improvement, we reserve the right to change specifications and design without prior notice. The illustrations do not necessarily show the standard version of the machine.



DIMENSIONS - SD110D2, SD110DD

A	Overall width	mm	2340
B	Drum width	mm	2134
C	Steering wheel height	mm	2390
D	Ground clearance	mm	472
E	Wheel base	mm	3345
F	Overall length	mm	5875
G	Overall height (top of cab)	mm	3100
G ₁	Overall height (top of beacon)	mm	3275
H	Curb clearance	mm	510
I (Φ)	Drum Diameter	mm	1500
J	Side clearance	mm	103

OPTIONAL EQUIPMENT

	SD110D2	SD110DD
Electrics and electronics		
Strobe Lamp	•	•
Other		
No-Spin Axle	•	•
Compaction Gauge	•	•
High Amplitude Eccentric	•	•
Tool Kit	•	•
Hydraulic Test Kit	•	•
Cold start kit	•	•

SELECTION OF VOLVO OPTIONAL EQUIPMENT

Bolt-on padfoot shell kit (SD110DD)

