

L960Hi Wheel Loader

Mining & Material Handling Expert

Engine Power : 230 hp

Payload : 5800 kg

Operating Weight : 18500 kg

Bucket Size : 3.6 (2.7~5.5) CuM



Built in India

Member of Volvo Group

This is SDLG's new high-end wheel loader, designed for heavy-duty operations such as mining.

HIGH EFFICIENCY



Features a powerful engine with high torque at lower RPM making it high efficient work horse in toughest mining applications

ENHANCED COMFORT



High capacity air conditioner with automatic climate control for enhanced comfort

RELIABILITY



Incorporates renowned brand components for the engine, transmission, and hydraulic and electrical systems, ensuring stable and reliable overall performance.

LONG BOOM



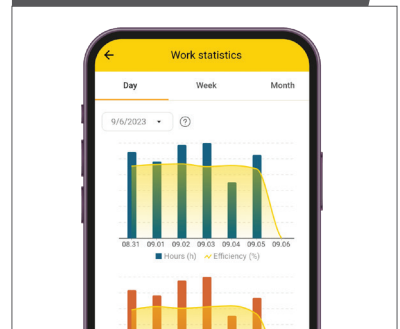
Equipped with Standard long boom ensures best in class dumping height to load big dumpers with ease

HEAVY-DUTY STRUCTURE



Heavy-Duty Structure Frame for extended durability

ADVANCED TELEMATICS



State-of-the-art telematics for real-time machine insights



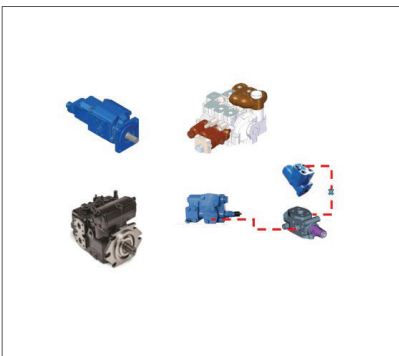
ENGINE

- 230 HP, 1250 Nm Torque, Fuel-Efficient CEV V Engine
- 3 Power Mode Selection for optimized fuel consumption
- Electronic Priming Pump for quick & automated air removal



TRANSMISSION

- New Generation VRT 205 Electronic Counter-shaft Power Shift HD Transmission with 4F & 4R gears
- With Kick-down & Direct Reversing
- Smooth & Comfortable gear shifting
- High Reliability & longer life
- Reinforced HD Axles with double sealing



HYDRAULIC SYSTEM

- Confluence flow by Variable & fixed displacement pumps for energy saving
- Load Sensing Hydraulic Steering System for precise maneuverability
- Single Joystick for improved efficiency & ease of use
- High-performance hydraulic components for vigorous operation

SAFETY FEATURES



Reverse Camera for better visibility



LED & Extra Working lights, reverse horn, and rotating beacon for better visibility



Features a spacious pressurized and shock-absorbing ROPS / FOPS Certified cabin with clear visibility, low noise, minimal vibration, and fast cooling air conditioning for a better working experience.



Seat belt, 3-point climbing access, and anti-slip perforated plates

L960Hi

Wheel Loader

ENGINE

- Fuel Efficient CEV-V Certified CRDI Engine
- 3 Power Selection Modes
- Higher Power & Torque

TRANSMISSION

- Counter shaft type HD Electronic Transmission
- Powershift with 4F & 4R Gear
- With Powercut off function

CONVENIENCE & SAFETY

- Easy & Ground level access of all lubricating points
- Reverse Camera
- 3 Point contacts & anti slip perforated plates
- LED working lamps
- Rotating Beacon

HYDRAULIC

- Single Joystick Pilot Control
- Proven & reliable hydraulic components
- Load sensing steering
- Variable & Fixed displacement Pumps
- Confluence Flow between Hydraulic & Steering system

CABIN

- Spacious ROPS / FOPS Certified
- Automatic Climate control A/c
- Cabin Fan
- Parabolic windshield for wider visibility
- Windshield Wipers
- Ergonomically designed controls
- Adjustable suspension Seats with Hand rest
- Adjustable Steering Column

OTHERS

- Multiple optional Bigger bucket
- SDLG Telematics with App
- Fuel Consumption on Display



STRUCTURE

- Heavy Duty Frames & structure
- Optimized & Reinforced boom & Z bar Linkage
- Long Boom for best in class Dump Height

AXLES

- SDLG HD Dry Axles
- Reinforced drive shafts
- Reliable Air over hydraulic disc brake

*The illustration may include optional equipment.

Technical Specifications

Standard Equipment

Engine	
Engine model	WP8231E671
Engine type	In-line, water-cooled, four-stroke, direct injection
Max Power hp	230 @ 2250 rpm
Maximum torque Nm	1250 @ 1400 rpm
Displacement (ml)	7800
Number of cylinders	6
Bore / stroke (mm)	110/136
Emission standard	CEV - V

Transmission System	
Make	SDLG
Type	Electronic Counter Shaft Power shift
No. of gears	F4 and R4
Torque converter	Single-stage three-element torque converter
Machine speed F1/ F2 / F3 / F4 (km/h)	0~6.7/12.4/25.9/38
Machine speed R1/ R2 / R3 / R4 (km/h)	0~6.8/12.5/26.1/38.2

Axles	
Make	SDLG make
Front & Rear	Heavy Duty axles with 36T Carrying Capacity
Rear Axle Oscillation (Deg)	±13°

Hydraulic system	
Type	Single joystick pilot hydraulic control
Pilot system working pressure (MPa)	3.5
Main Pump Type	Gear Pump
Maximum flow (ltrs/min)	348
System working pressure (MPa)	19.5

Hydraulic cycle time	
Bucket lift time (full load)	≤ 5.5 s
Bucket fall time (no load)	≤ 3.5 s
Bucket dumping time (no load)	≤ 1.2 s
Total cycle time	≤ 10.2 s

Steering System	
Type	Load-sensing full hydraulic articulated steering
Pump	Variable Piston Pump
Working pressure (MPa)	21
Steering angle (°)	38°
Steering pump flow (lpm)	222

Brake system	
Service brake	Air over Hydraulic Disc Brakes
Parking brake	Mechanically operated disc brake
Brake pressure (MPa)	0.784

Tyres	
Tyre size	23.5 x 25 L3
Front Tyre pressure (MPa)	0.38~0.40
Rear tyre pressure (MPa)	0.32~0.34

Cabin	
Type	ROPS/FOPS Level 2 Certified Standard with
AC	Automatic Climate Control & dual filters
Operator seat	Mechanical suspension Seat Standard
Seat belt	Standard
Rotating beacon light	Standard
Music System	FM / MP3 Player with Aux & Bluetooth connectivity

Performance	
Payload capacity (kg)	5800
Bucket volume, Heaped ISO/SAE Cu.m (GP)	3.6
Operating weight (kg)	18500
Maximum breakout force (kN)	≥170
Maximum traction force (kN)	≥170
Static Tipping Load Straight (kg)	14485
Static Tipping Load Full Turn (kg))	12450

Electrical system	
Voltage	24V
Batteries	2

Dimensions with 3.6 M3 GP Bucket		
A. Overall length (mm)	8730	
B. Wheelbase (mm)	3300	
C. Overall height (mm)	3450	
D. Minimum ground clearance (mm)	420	
E. Maximum dumping height (mm)	3400	
F. Axis pin at maximum lift height (mm)	4540	
G. Corresponding dump reach (mm)	1160	
H. Gradeability (0)	30°	
J. Dumping angle (0)	-45°	
K. Bucket roll back at ground level (0)	45	
L. Overall width (mm)	3024	
M. Outside width of wheel (mm)	2785	
N. Wheel tread(mm)	2250	
O. Min. turning radius outside rear wheel (mm)	6030	
P. Horizontal crossing radius outside bucket (mm)	7150	

System Refill Capacity	Volume	Change Interval
Diesel filling capacity of fuel tank (L)	300	
Hydraulic Oil tank filling capacity (L)	210	Every 2000
Transmission oil filling capacity (L)	17.1 + 4.7	First 50 / Every 1000
Oil filling capacity of braking system (L)	4	
Oil filling capacity of axles (main drive and wheel reducer) (L)	30 + 30	First 50 / Every 1000
Engine oil filling capacity (L)	22	Every 500
Antifreeze coolant (L)	45	Every 2000

Optional Attachments		
HD Bucket (m3)	2.7 / 3.0	
LM Bucket (m3)	5.1 / 5.5	
Pallet fork	Available	
Pre-cleaner	Oil bath pre-cleaner	
Side Discharge Bucket	Available	

