

# L940Hi Wheel Loader

Power, Performance & Precision

Engine Power : 150 hp

Payload : 4000 kg

Operating Weight : 12100 kg

Bucket Size : 2.4 (2.0~3.5) CuM



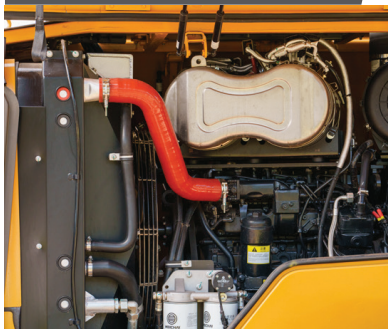
**Built in India**

**Member of Volvo Group**



SDLG L940Hi Wheel Loader – your go-to machine for demanding tasks that require a balance of power, flexibility, and efficiency. Built for construction, mining, and industrial applications, the L940Hi combines top-tier performance with innovative engineering to provide a versatile solution for various work conditions.

#### POWERFUL PERFORMANCE



Equipped with a Powerful CEV- V Certified engine with 720Nm torque delivers enhanced power and driving force for tougher tasks.

#### EFFICIENT FUEL MANAGEMENT



The electronically controlled high-pressure common rail engine offers three power modes (L, S, H) that adjust based on load conditions, optimizing fuel consumption and boosting productivity

#### VERSATILE AND FLEXIBLE



With a moderate wheelbase, the L940Hi provides both strong digging force and flexibility, enabling multiple applications and reducing equipment downtime for maximum productivity.

#### ADVANCED HYDRAULIC SYSTEM



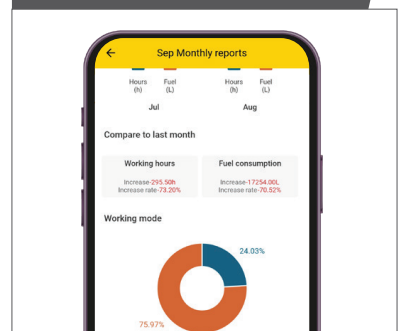
Featuring an advanced hydraulic system with bucket auto levelling. This loader boasts fast lifting speed, high-rated working pressure, and exceptional efficiency.

#### ENHANCED COMFORT



Features a spacious pressurized and shock-absorbing ROPS / FOPS Certified cabin with clear visibility, low noise, minimal vibration, and fast cooling air conditioning for a better working experience.

#### ADVANCED TELEMATICS



State-of-the-art telematics for real-time machine insights



## ENGINE

- 150 HP, 720 Nm Torque, Fuel-Efficient CEV V Engine
- 3 Power Mode Selection for optimized fuel consumption
- Electronic Priming Pump for quick & automated air removal



## TRANSMISSION

- New Generation Planetary Power Shift HD Transmission with 2F & 1R gears
- Optimized gear ratio for smooth & Efficient shifting
- High Reliability & longer life
- Reinforced HD Axles with double sealing



## HYDRAULIC SYSTEM

- Load Sensing Hydraulic Steering System for precise maneuverability
- Single Joystick for improved efficiency & ease of use
- High-performance hydraulic cylinders for heavy-load handling
- Separate pumps for hydraulic and steering functions for fast and efficient operations

## SAFETY FEATURES



Reverse Camera for better visibility

---



Extra Working lights, reverse horn, and rotating beacon for better visibility

---



Ground level access of all lubricating points with extended metal pipes

---



Seat belt, 3-point climbing access, and anti-slip perforated plates

---



# L940Hi

## Wheel Loader

### ENGINE

- Fuel Efficient CEV-V Certified CRDI Engine
- 3 Power Selection Modes
- Higher Power & Torque

### TRANSMISSION

- Planetary type HD Transmission
- Powershift with 2F & 1R Gear
- With Powercut off function

### CONVENIENCE & SAFETY

- Easy & Ground level access of all lubricating points
- Reverse Camera
- 3 Point contacts & anti slip perforated plates
- Extra working lamps
- Rotating Beacon

### HYDRAULIC

- Single Joystick Pilot Control
- Proven & reliable hydraulic components
- Load sensing steering
- Separate pumps for Hydraulic & Steering system

### CABIN

- Spacious ROPS / FOPS Certified A/c Cabin
- Cabin Fan
- Parabolic windshield for wider visibility
- Windshield Wipers
- Ergonomically designed controls
- Adjustable suspension Seats with Hand rest
- Adjustable Steering Column

### OTHERS

- Multiple optional Bigger bucket
- SDLG Telematics with App
- Fuel Consumption on Display



### STRUCTURE

- Heavy Duty Frames & structure
- Optimized & Reinforced boom & Z bar Linkage

### AXLES

- SDLG HD Dry Axles
- Reinforced drive shafts
- Reliable Air over hydraulic disc brake

\*The illustration may include optional equipment.

# Technical Specifications

## Standard Equipment

Engine	
Engine model	WP4. 6NG150 E675
Engine type	In-line, water-cooled, four-stroke, direct injection
Max Power hp	150 @ 2250 rpm
Maximum torque Nm	720 @ 1400 rpm
Displacement (ml)	4580
Number of cylinders	4
Bore / stroke (mm)	108 /125
Emission standard	CEV V

Transmission System	
Make	SDLG
Type	Planetary power shift
No. of gears	F2 and R1
Torque converter	Single stage four element twin turbine torque convertor
Machine speed F1 / F2 (km/h)	0~13 / 38
Machine speed R1 (km/h)	0~17

Axles	
Make	SDLG make
Front & Rear	Heavy Duty axles with 26T carrying capacity
Rear Axle Oscillation (Deg)	±11°

Hydraulic system	
Type	Single joystick pilot hydraulic control
Pilot system working pressure (MPa)	3.5
Main Pump Type	Gear Pump
Maximum flow (ltrs/min)	202
System working pressure (MPa)	19

Hydraulic cycle time	
Bucket lift time (full load)	≤ 5.5 s
Bucket fall time (no load)	≤ 3.5 s
Bucket dumping time (no load)	≤ 1.0 s
Total cycle time	≤ 10.0 s

Steering System	
Type	Load-sensing full hydraulic articulated steering
Working pressure (MPa)	14
Steering angle (°)	38°
Steering pump flow (lpm)	127

Brake system	
Service brake	Air over Hydraulic Disc Brakes
Parking brake	Mechanically operated disc brake
Brake pressure (MPa)	0.784

Tyres	
Tyre size	17.5 x 25 L3
Front Tyre pressure (MPa)	0.31~0.33
Rear tyre pressure (MPa)	0.27~0.29

Cabin	
Type	ROPS/FOPS Level 2 Certified
AC	Standard with dual filters
Operator seat	Mechanical suspension Seat
Seat belt	Standard
Rotating beacon light	Standard
Music System	FM / MP3 Player with Aux & Bluetooth connectivity

Performance	
Payload capacity (kg)	4000
Bucket volume, Heaped ISO/SAE Cu.m (GP)	2.4
Operating weight (kg)	12100
Maximum breakout force (kN)	≥106
Maximum traction force (kN)	≥110
Static Tipping Load Straight (kg)	9780
Static Tipping Load Full Turn (kg))	7980

Electrical system	
Voltage	24V
Batteries	2

Dimensions with 2.4 M3 GP Bucket		
A. Overall length (mm)	7360	
B. Wheelbase (mm)	2850	
C. Overall height (mm)	3340	
D. Minimum ground clearance (mm)	370	
E. Maximum dumping height (mm)	2890	
F. Axis pin at maximum lift height (mm)	3790	
G. Corresponding dump reach (mm)	1195	
H. Gradeability (0)	30°	
J. Dumping angle (0)	-45°	
K. Bucket roll back at ground level (0)	45°	
L. Overall width (mm)	2520	
M. Outside width of wheel (mm)	2310	
N. Wheel tread(mm)	1865	
O. Min. turning radius outside rear wheel (mm)	5250	
P. Horizontal crossing radius outside bucket (mm)	6100	

System Refill Capacity	Volume	Change Interval
Diesel filling capacity of fuel tank (L)	160	
Hydraulic Oil tank filling capacity (L)	128	Every 2000
Transmission oil filling capacity (L)	44	First 50 / Every 1000
Oil filling capacity of braking system (L)	4	
Oil filling capacity of axles (main drive and wheel reducer) (L)	18 +18	First 50 / Every 1000
Engine oil filling capacity (L)	12	Every 500
Antifreeze coolant (L)	30	Every 2000

Optional Attachments	
HD Bucket (m3)	2.0
LM Bucket (m3)	3.5
Pallet fork	Available
Pre-cleaner	Oil bath pre-cleaner
Side Discharge Bucket	Available

